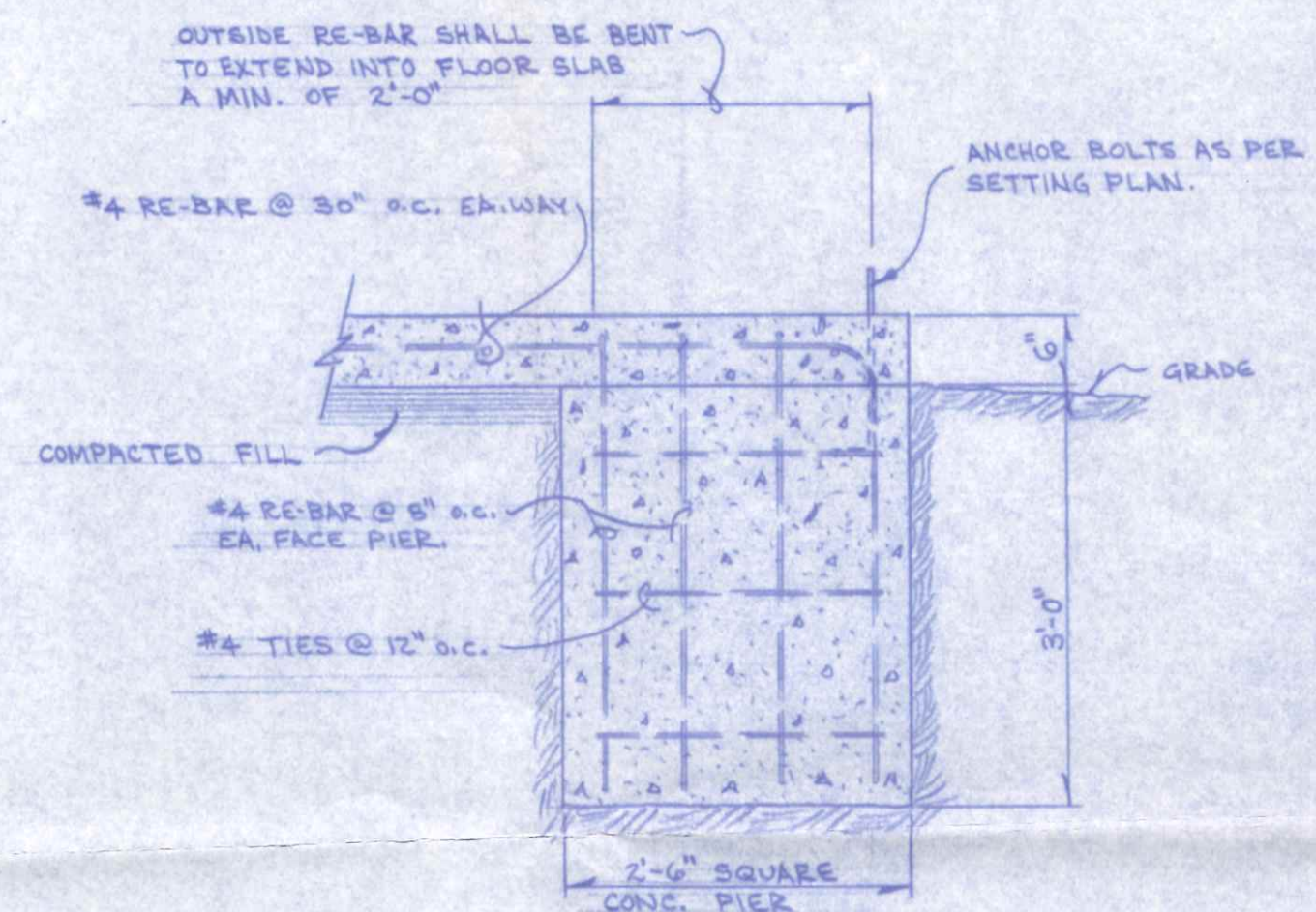


VERNON WACHTMAN BUILDER
 BUILDING ADD'N. FOR GILSON MACHINE & TOOL CO.

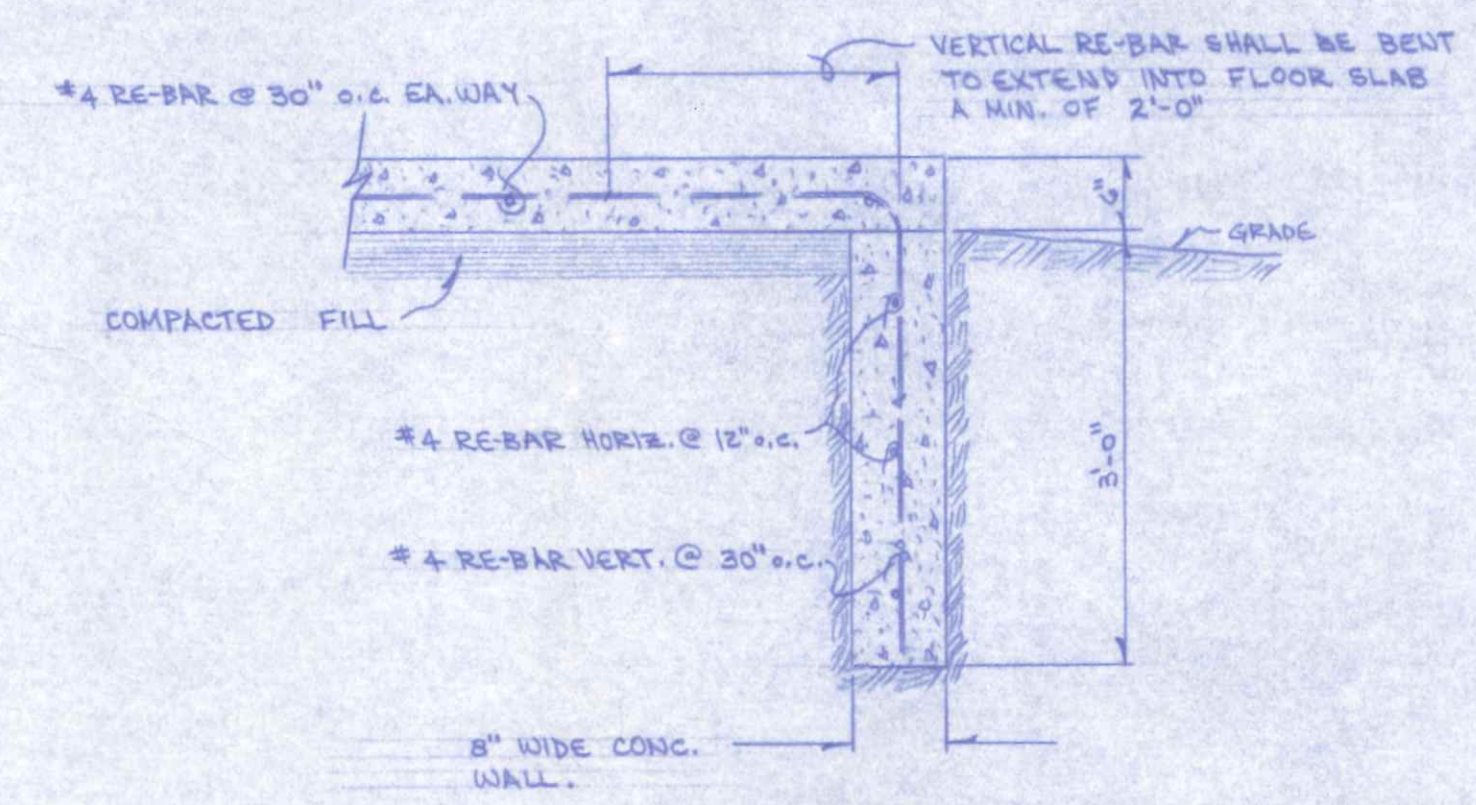
JUNE, 1985

SCALE: AS NOTED

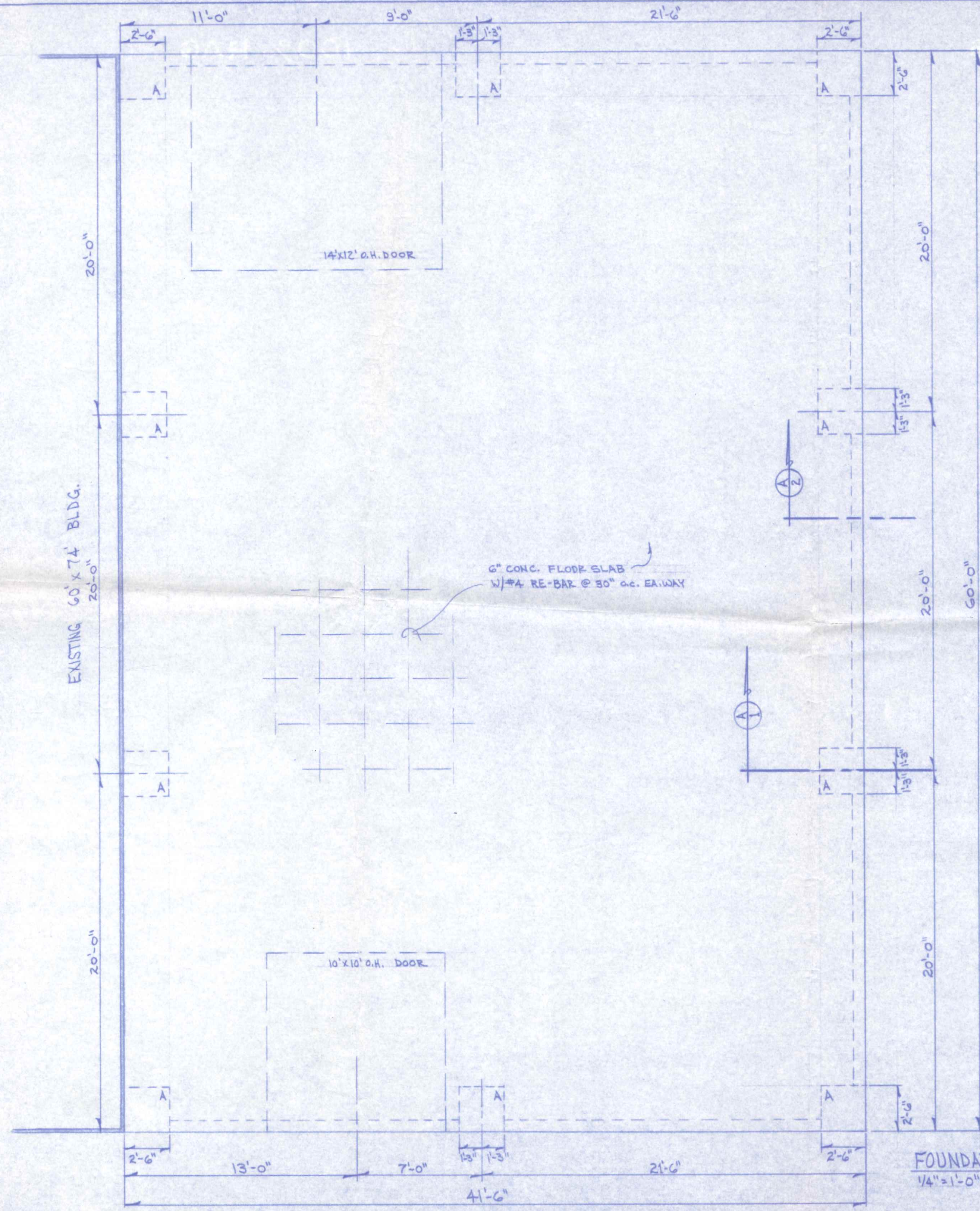
NOTE: A = 30" x 30" CONC. PIER (SEE DETAIL A-1)
 DESIGN BASED ON SOIL BEARING CAPACITY OF
 2500 p.s.f. - CONCRETE SHALL BE MIN. 3000 p.s.i.
 COMPRESSIVE STRENGTH @ 30 DAYS.



SECTION A-1
 3/4" = 1'-0"



SECTION A-2
 3/4" = 1'-0"

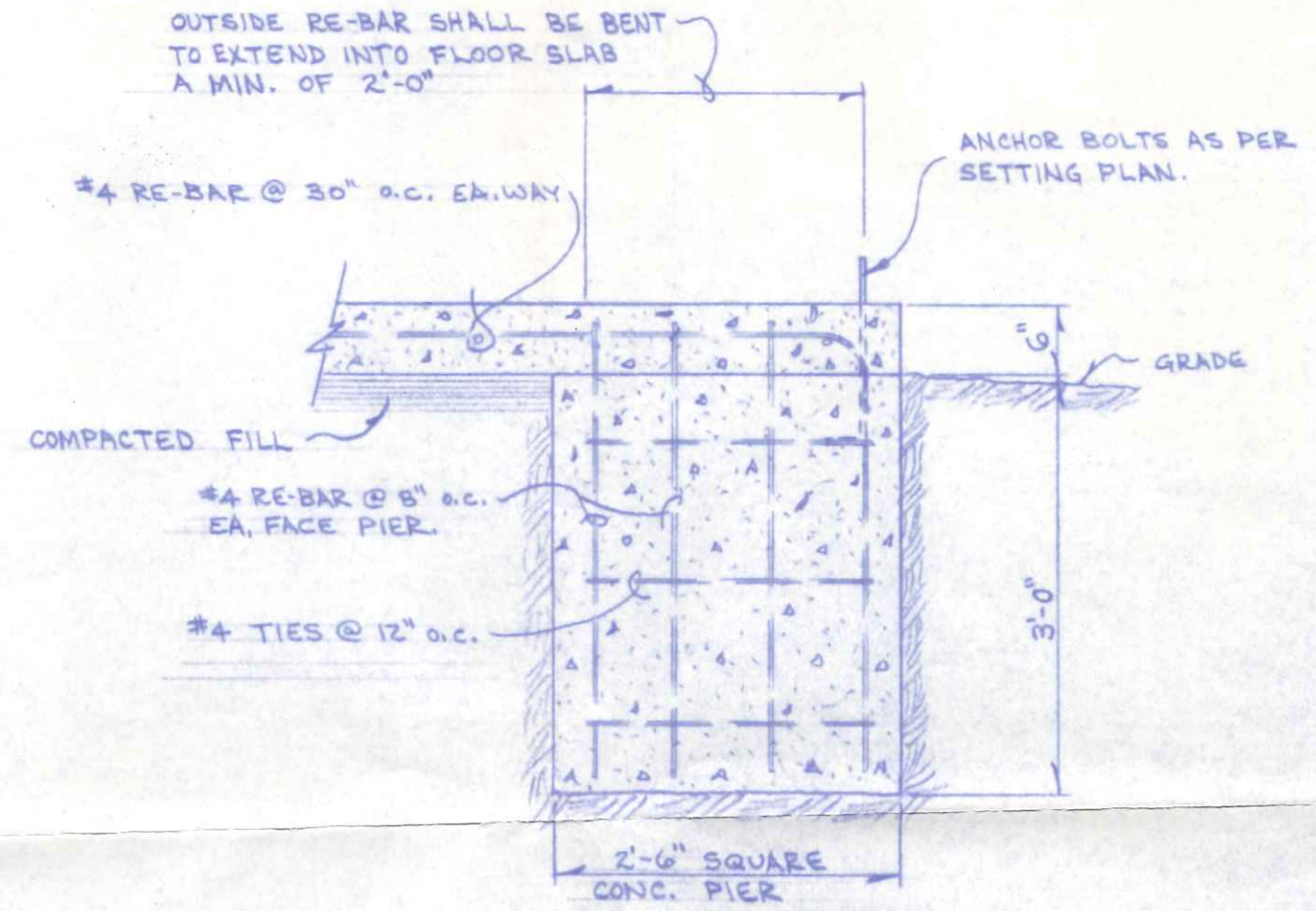


FOUNDATION PLAN
 1/4" = 1'-0"

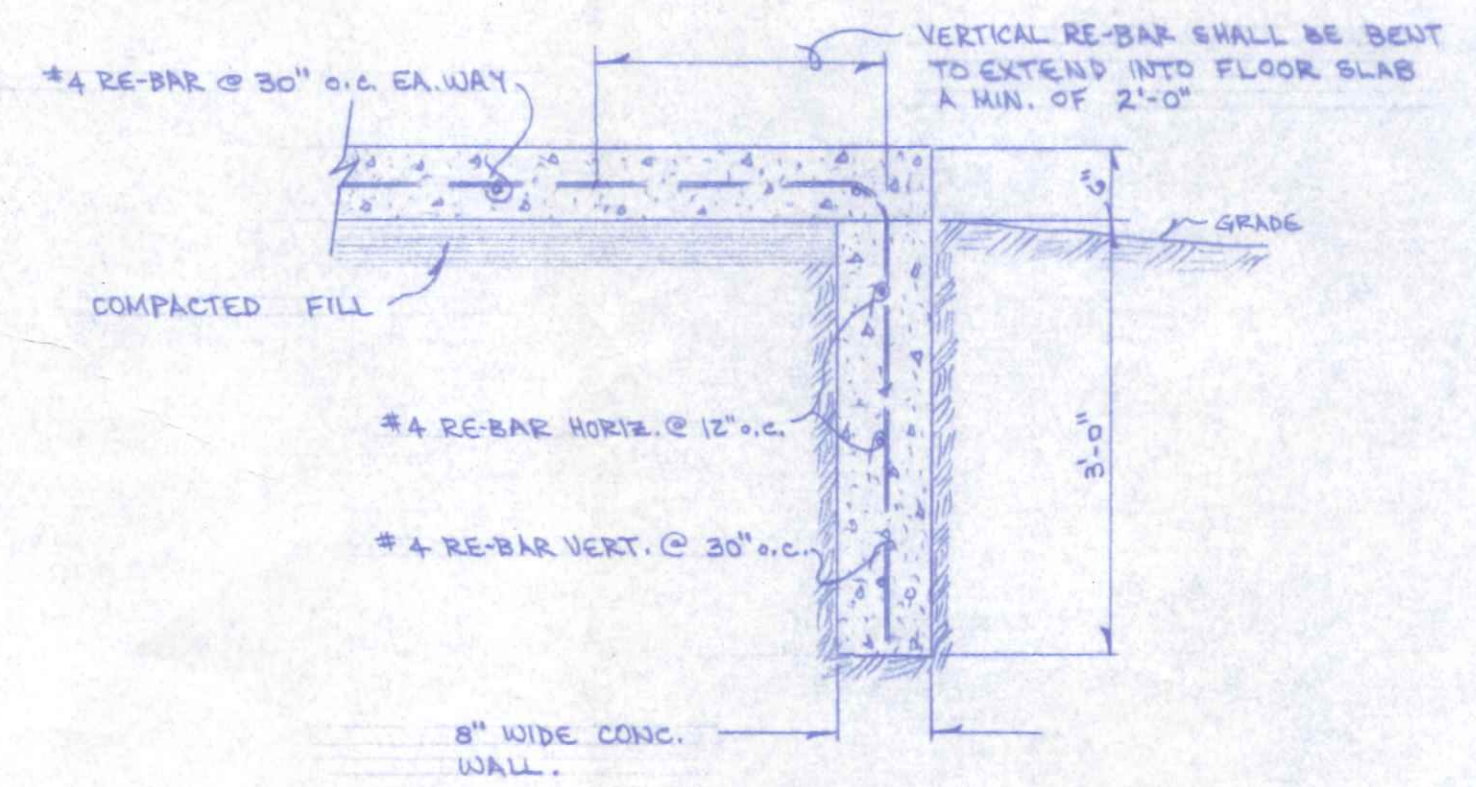
529 Freedom
 NAPOLEON ENGINEERING & SURVEYING, INC.
 OHIO PROFESSIONAL ENGINEER:
 Marc S. Gerken, P.E.
 R.D.S.

VERNON WACHTMAN BUILDER
 BUILDING ADD'N. FOR GILSON MACHINE & TOOL CO.
 JUNE, 1985 SCALE: AS NOTED

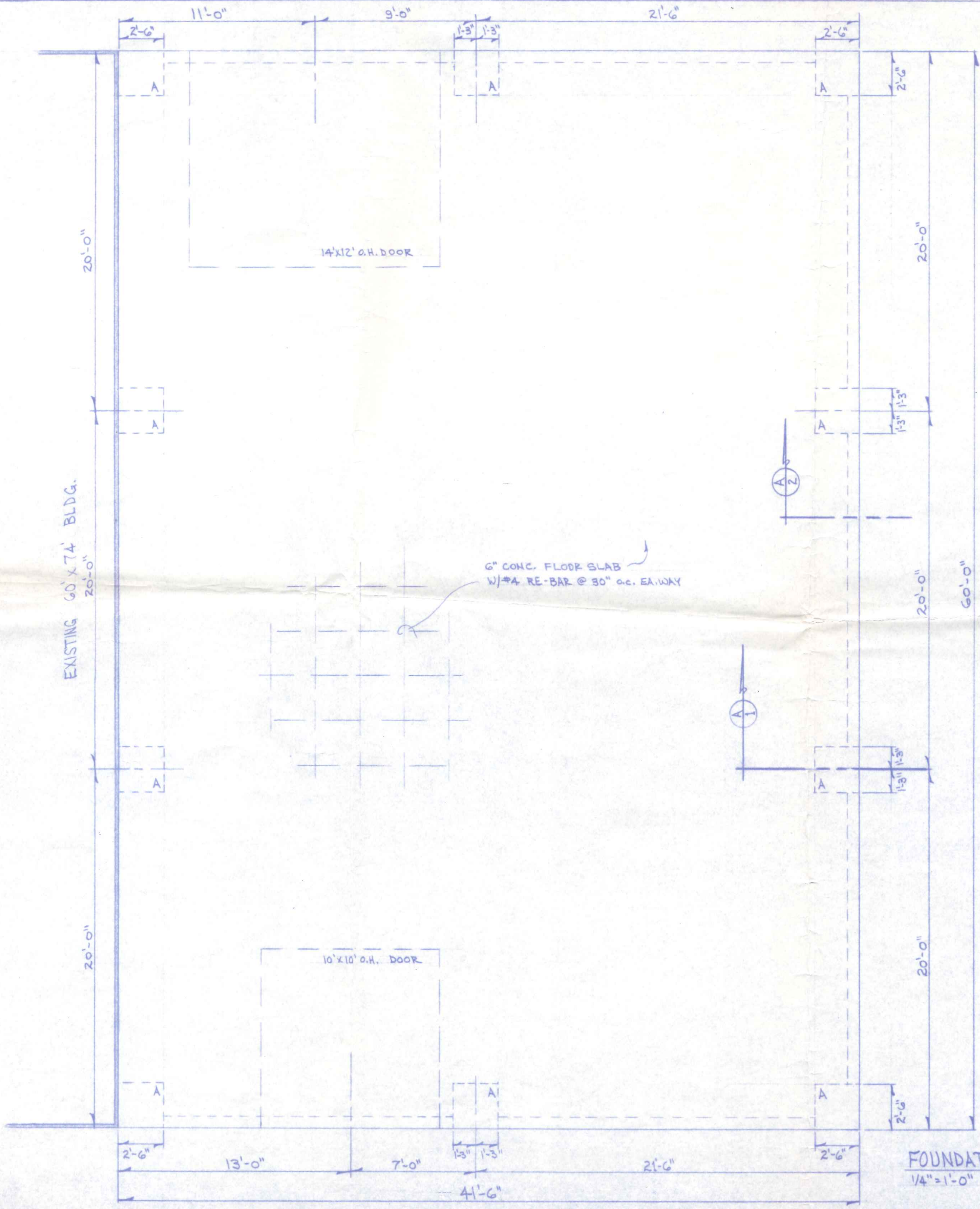
NOTE: A = 30" x 30" CONC. PIER (SEE DETAIL A-1)
 DESIGN BASED ON SOIL BEARING CAPACITY OF
 2500 p.s.f. - CONCRETE SHALL BE MIN. 3000 p.s.i.
 COMPRESSIVE STRENGTH @ 30 DAYS.



SECTION A-1
 3/4" = 1'-0"



SECTION A-2
 3/4" = 1'-0"



FOUNDATION PLAN
 1/4" = 1'-0"

HAPLEIGH ENGINEERING & SURVEYING, INC.
 OHIO PROFESSIONAL ENGINEERS

Marc S. Gerken
 MARC S. GERKEN, P.E.

